



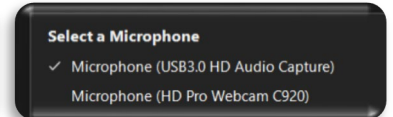
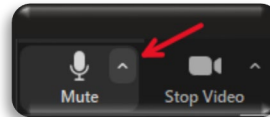
Zoom® USB Audio/Video Capture Cable

On the teacher's desk, you should find a USB cable labeled: **Zoom Audio/Video Capture**. This cable may be used with your laptop or plugged into the left side of the monitor to be used with the classroom computer. **The Zoom Audio/Video Capture cable enables the use of the Logitech® webcam and microphone, Elmo® doc cam, and the Shure® wireless headworn microphone.**



Zoom® Microphone Options

Using the up arrow on the microphone button, select your desired microphone. (**IMPORTANT:** Zoom® may default to your laptop mic. Always check that the correct device is selected.)



OPTION 1: SHURE® wireless headworn microphone - Select **Microphone (USB3.0 HD Audio Capture)**.

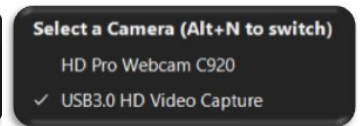
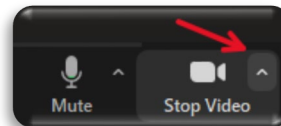
OPTION 2: Logitech® C920 HD Pro Webcam - Select **Microphone (HD Pro Webcam C920)**.

Zoom® Video

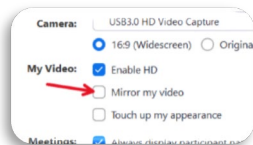
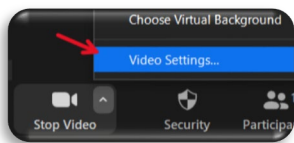
Using the up arrow on the video button, select your desired video device.

OPTION 1: Logitech® C920 HD Pro Webcam - Select **HD Pro Webcam C920**.

OPTION 2: Elmo® Doc Cam – Select **USB3.0 HD Video Capture**.



Please note that Zoom® video is mirrored by default for your view. Go into the **Video Settings** and uncheck **Mirror my video**.



Zoom® Doc Cam Tips

Rotating the Doc Cam: You can rotate the doc cam head to show yourself, or the class. If you are showing yourself, you will need to rotate the image on the Elmo 180°.

Whiteboard: The surface of the doc cam can also be used as a whiteboard.

