



HUMAN

ATURE

**KATHY ROBB**  
MFA THESIS EXHIBITION

Moss-Thorns Gallery  
600 Park St., Hays, Kansas  
January 24-February 23

**Opening Reception:** February 4th

**Time:** 6-8pm

**MT**  
FORE HAYS STATE UNIVERSITY'S  
MOSS-THORNS  
GALLERY OF ART  
© The Patricia A. Schmitt Gallery Library



*How Long Were You There?*

Kathy Robb

Porcelain Paper Clay, Underglaze

17" x 65" x 25"

\$3000





## *Sundown*

Kathy Robb

Acrylic

4' x 5'

\$300

## *All That*

Kathy Robb

Porcelain Paper Clay, Underglaze, Pan Pastels,

Synthetic Hair

23" x 24" x 9"

\$2000



## *Dimensions*

Kathy Robb

Acrylic

38" x 72"

\$1200

## *Catch Me, if you can*

Kathy Robb

Porcelain Paper Clay, Underglaze, Pan Pastels

10" x 12 <sup>3</sup>/<sub>8</sub>" x 8 <sup>3</sup>/<sub>4</sub>"

\$600









## *The Webs We Weave*

Kathy Robb

### *Spider*

2  $\frac{3}{8}$ " x 4" x 4  $\frac{3}{4}$ "

\$150

### *Trees*

Tallest 29" x 8" x 8  $\frac{1}{2}$ "      \$150

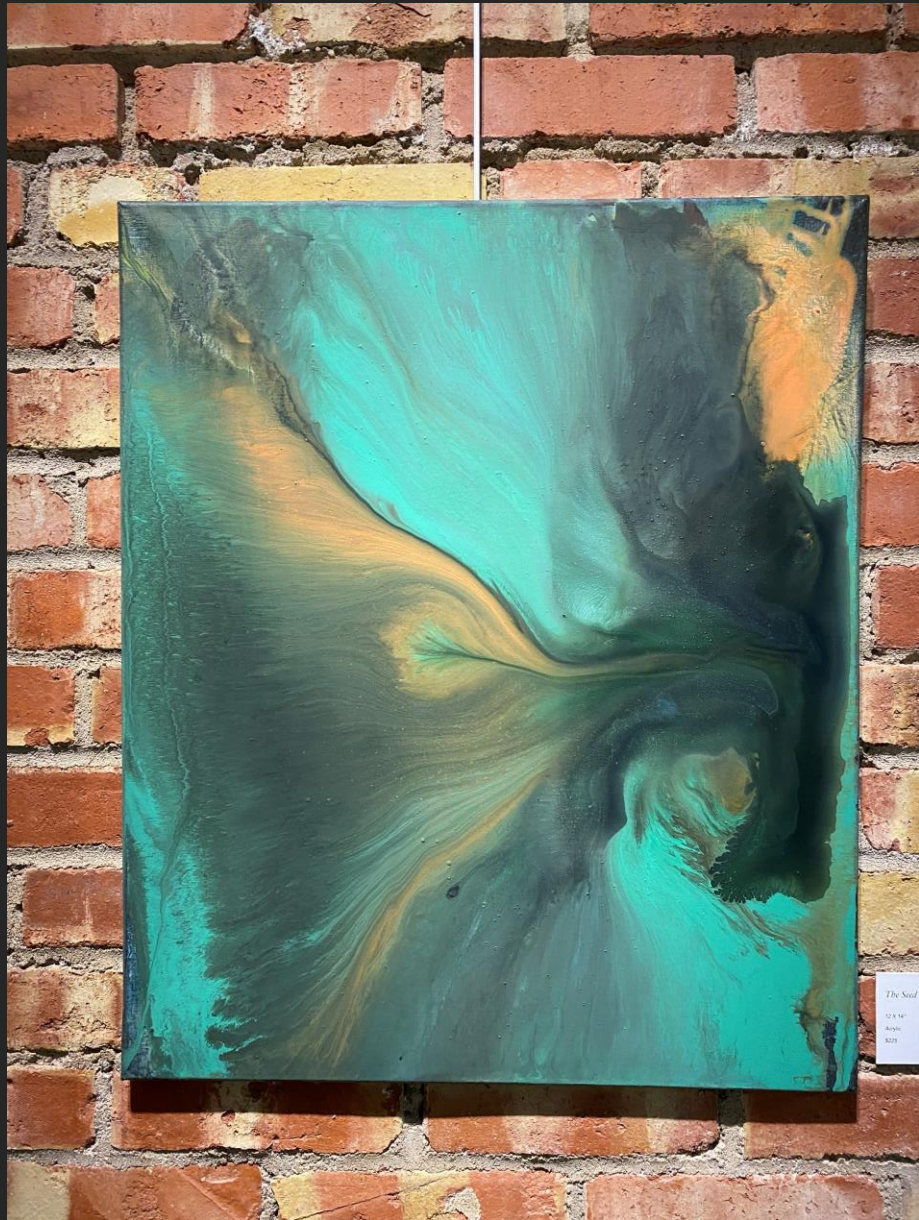
Next 25  $\frac{7}{8}$ " x 13" x 6"      \$150

Smallest 25  $\frac{1}{2}$ " x 8  $\frac{3}{4}$ " x 6"      \$150

Porcelain Paper Clay. Underglaze, Pan Pastels, Epoxy







*The Seed*

Kathy Robb  
Acrylic  
12" x 14"  
\$225



*Convergence*

Kathy Robb

Acrylic

12" x 14"

\$225





## *Baby*

Kathy Robb  
Porcelain Paper Clay,  
Underglaze, Pan Pastels  
2 ¼" x 4" x 3 ¼"  
\$150

## *My Hiding Place*

Kathy Robb  
Porcelain Paper Clay, Underglaze, Spray Paint  
27" x 10" x 10 ½"  
\$250





## *Dumbfounded*

Kathy Robb

Porcelain Paper Clay, Underglaze, Pan Pastels

8 ½" x 6 ½" x 3 ¾"

\$150





## *Stretch*

Kathy Robb

Porcelain Paper Clay, Underglaze, Pan Pastels

6 ½" x 13" x 5 ½"

\$150



*Over Here*

Kathy Robb

Porcelain Paper Clay, Underglaze, Pan Pastels

12" x 6" x 4 ½"

\$150





## *Storing Treasures*

Kathy Robb

Porcelain Paper Clay, Underglaze, Pan Pastels

25" x 10 ½" x 7"

\$450









*Interloper*

Kathy Robb

Porcelain Paper Clay, China Paint, Acrylic

7" x 9" x 2 ¾"

\$350



## *Say What*

Kathy Robb

Porcelain Paper Clay, Underglaze, Pan Pastels

12" x 17" x 6"

\$350





*Eaves Dropper*

Kathy Robb

Porcelain Paper Clay, Underglaze, Pan Pastels

15" x 15" x 9 ½"

\$350







*Mine!*

Kathy Robb

Porcelain Paper Clay, Underglaze, Pan Pastels

16 ½" x 25 ½" x 10"

\$1000

*Dead Rabbit*

2 ¼" x 8 ½" x 5 ½"



## *Turbulence*

Kathy Robb

Acrylic

30" x 40"

\$400

## *Scorned*

Kathy Robb

Porcelain Paper Clay, Underglaze, Pan Pastels

16 ¼" x 19 ⅜" x 12 ⅛"

\$700





## *Look Dad*

Kathy Robb

Porcelain Paper Clay, Underglaze, Pan Pastels, Mixed Media

*Fawn and Rock* 14  $\frac{3}{4}$ " x 15  $\frac{1}{2}$ " x 13  $\frac{7}{8}$ "

*Tree* 116  $\frac{1}{2}$ " x 52" x 58"

*Antler* 6  $\frac{1}{2}$ " x 15  $\frac{1}{2}$ " x 12  $\frac{1}{2}$ "

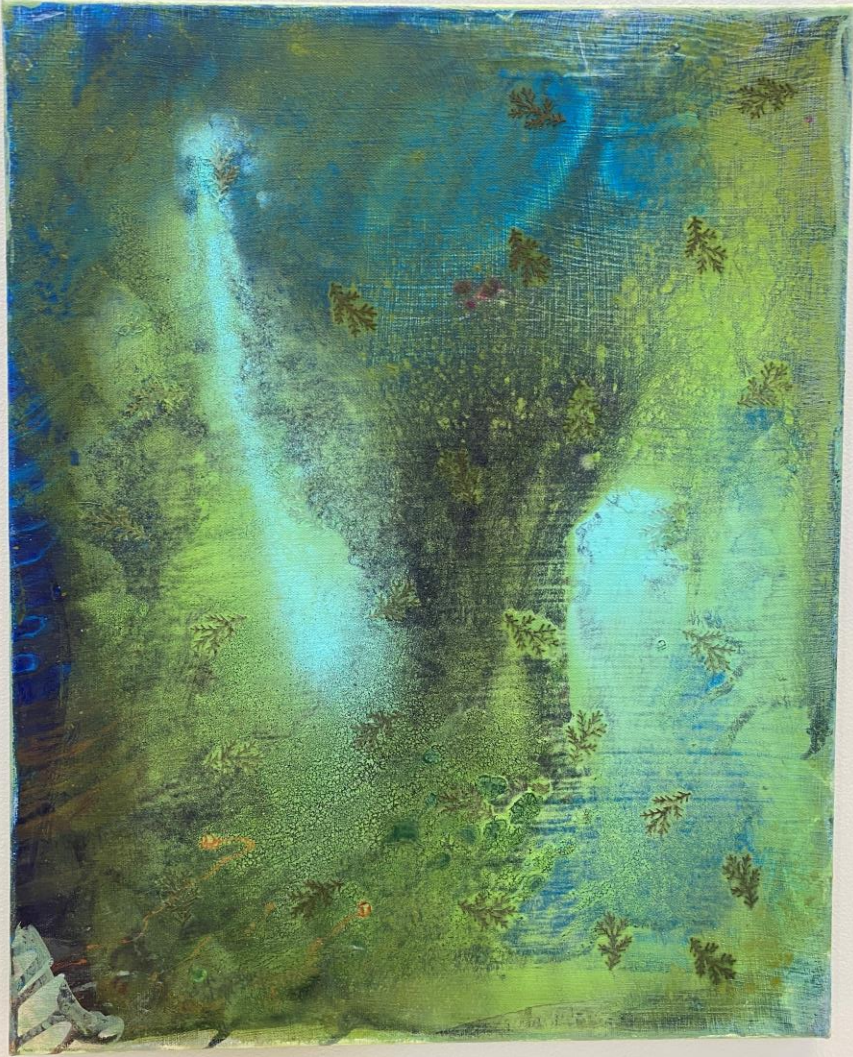
\$1200





Mule Buck Deer  
On Loan  
Sternberg Natural History Museum  
Fort Hays State University





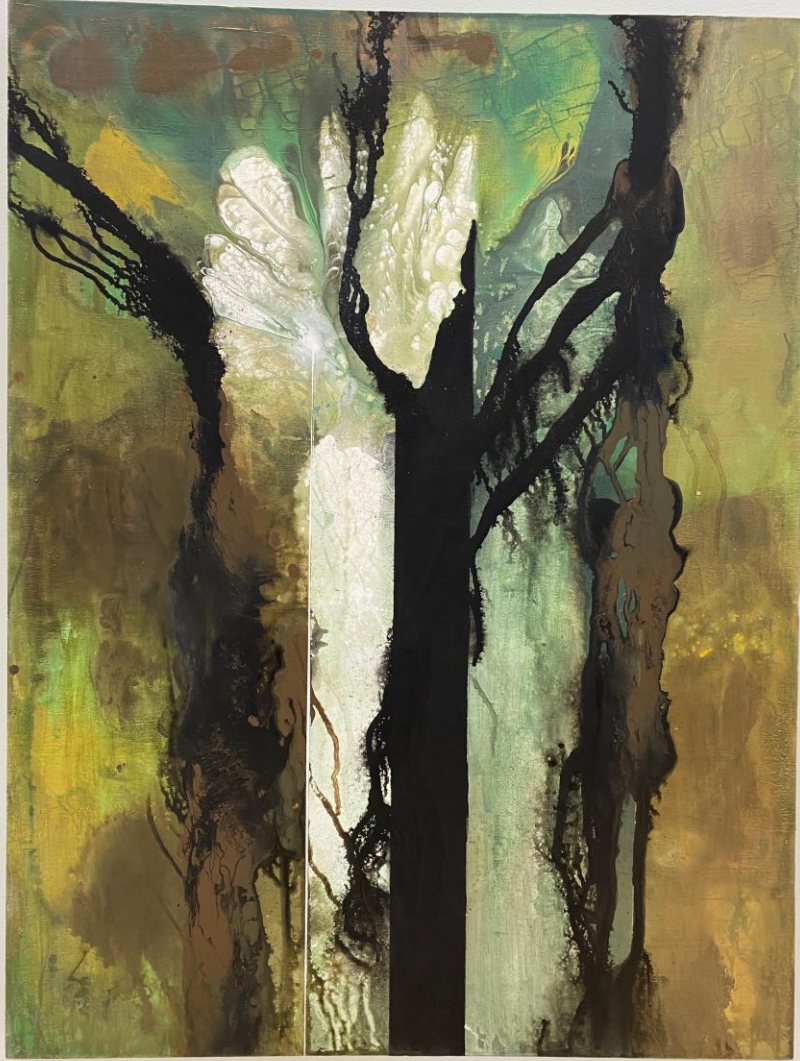
*Misty*

Kathy Robb

Acrylic

9" x 12"

\$150



*Enchanted*

Kathy Robb

Acrylic

3' x 4'

\$1200





*Elements*

Kathy Robb

Acrylic

9" x 12"

\$150



*I Can Fly*

Kathy Robb

Porcelain Paper Clay, Underglaze, Pan Pastels

26" x 18" x 7"

\$600





*The Waiting Game...in the waiting*

Kathy Robb

Porcelain Paper Clay, Underglaze, Pan Pastels

8 ¼" x 14" x 8"

\$550



*Becoming a Butterfly*

Kathy Robb

Porcelain Paper Clay, Underglaze, Pan Pastels

26" x 11 ½" x 7"

NFS





## *Becoming a Butterfly*

Kathy Robb

Porcelain Paper Clay, Underglaze, Pan Pastels

<i>Butterfly Branch 1</i> (top branch)– 6 ½” x 23” x 9 ½”	\$200
<i>Butterfly Branch 2</i> (top right)– 8” x 14” x 6”	\$150
<i>Butterfly Branch 3</i> (bottom right) – 6½” x 16” x 9 ½”	\$150
<i>Butterfly Branch 4</i> (bottom left)– 7 ¾” x 15 ½” x 6 ¼”	\$150
<i>Butterfly Branch 5</i> (top left) – 6 ½” x 14” x 5”	\$150





MIT

---

FORT HAYS STATE UNIVERSITY'S  
MOSS-THORNS  
GALLERY *of* ART

& The Patricia A. Schmidt Gallery Lobby