

# LANDFALL PRESS FIVE DECADES

*TRAVELING EXHIBITION*

On loan from Jack Lemon

**Opening Reception:**

6-8 pm Friday, September 16th

**Dates:** September 16th - October 28th

**Artist Talk from Jack Lemon**

6:30pm Friday September 16th

**Gallery Hours:** 9-4pm Monday - Friday

12-5pm Saturdays October 1st, 8th, & 15th

**MT**  
MOSS-THORNS  
GALLERY of ART  
© The Patricia A. Schmidt Gallery Lobby



This exhibit features artwork from Christo, Tom Huck, Judy Chicago, Chuck Close, Kara Walker, and many more!

1970's



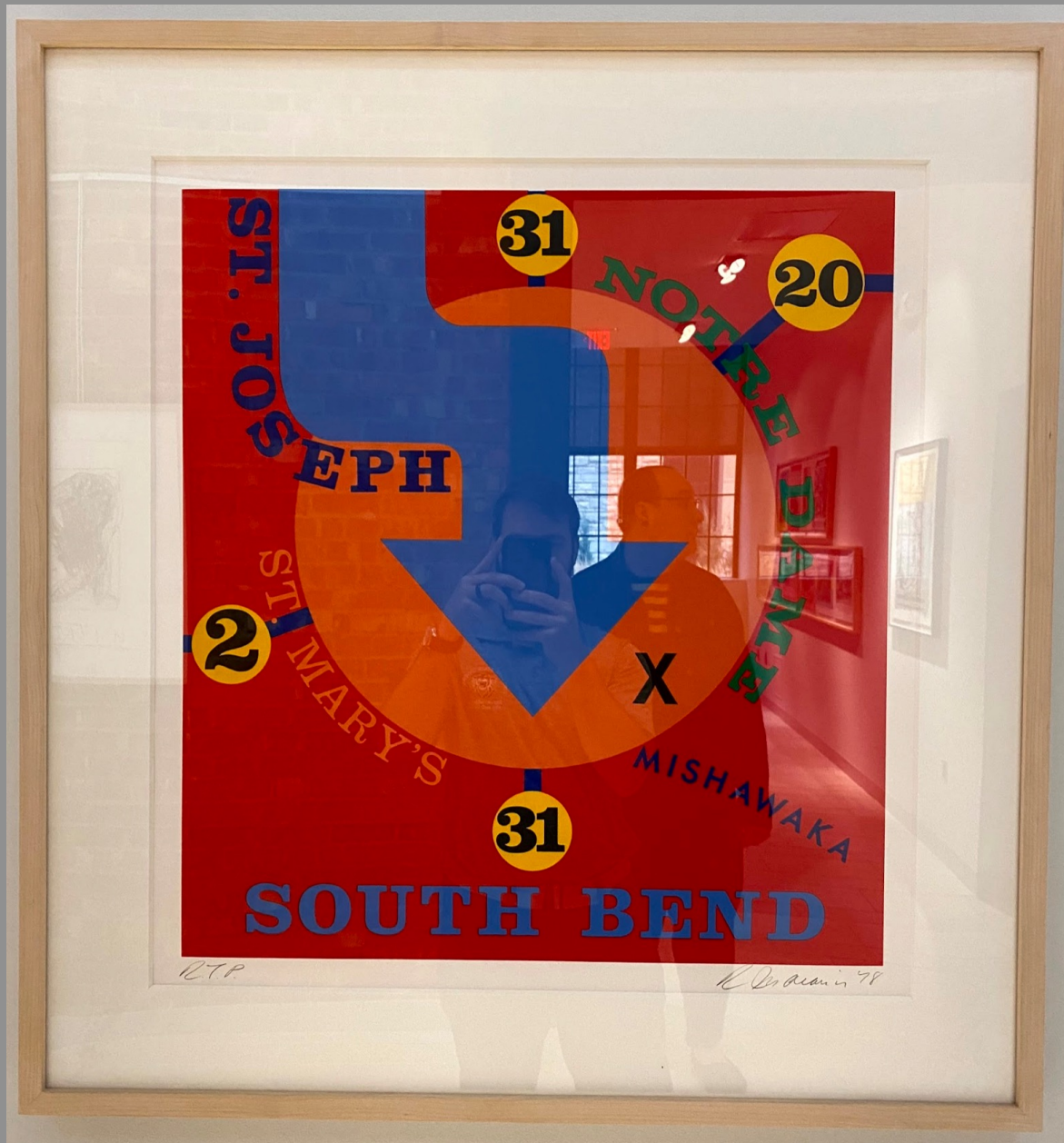
## Death Ship of No Port

H.C. Westermann

1967

Lithograph

18" x 21"



## South Bend

Robert Indiana

1978

Lithograph

30.5" x 28"



## Keith IV

Chuck Close

1975

Lithograph

30" x 22"



## Picasso Cufflink

Claes Oldenburg

1974

Lithograph

35" x 27"



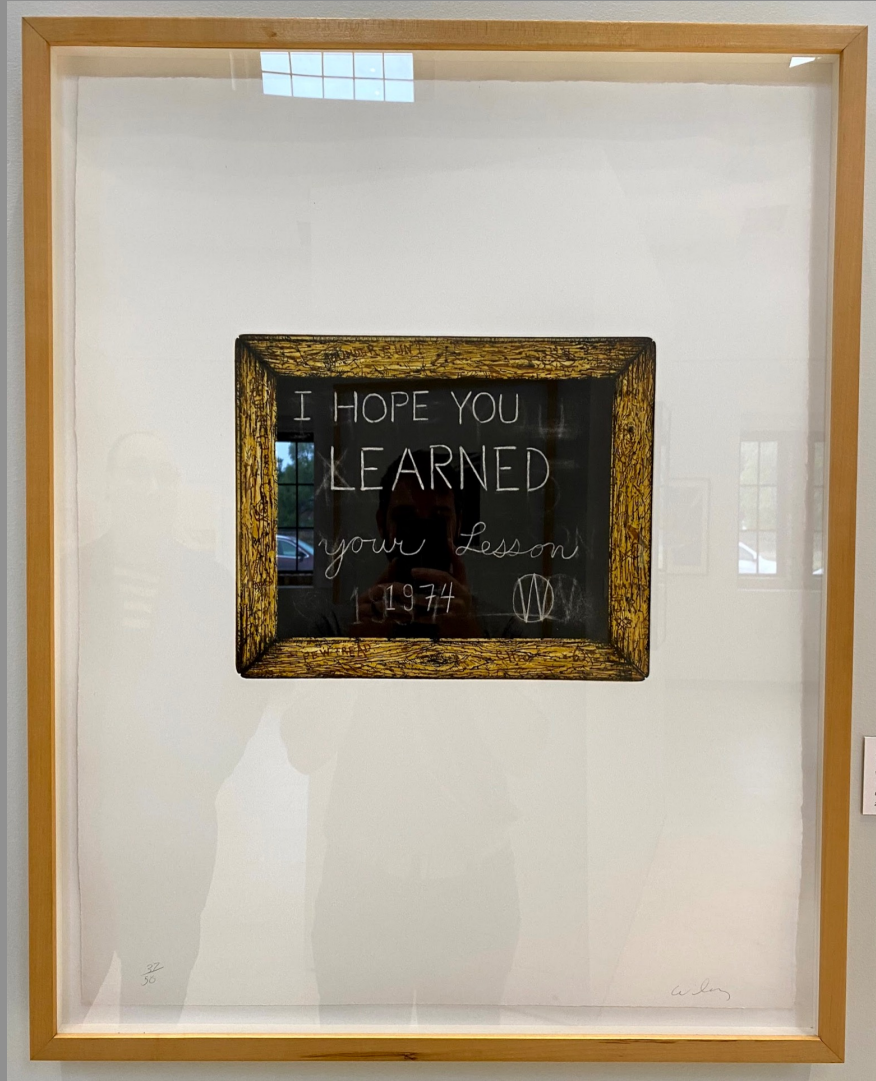
## Juarez Suite

Terry Allen

1975

9 Lithographs with LP

12.625" x 12.625"



## I Hoped You Learned Your Lesson

William T. Wiley

1975

Etching

28.25" x 22"





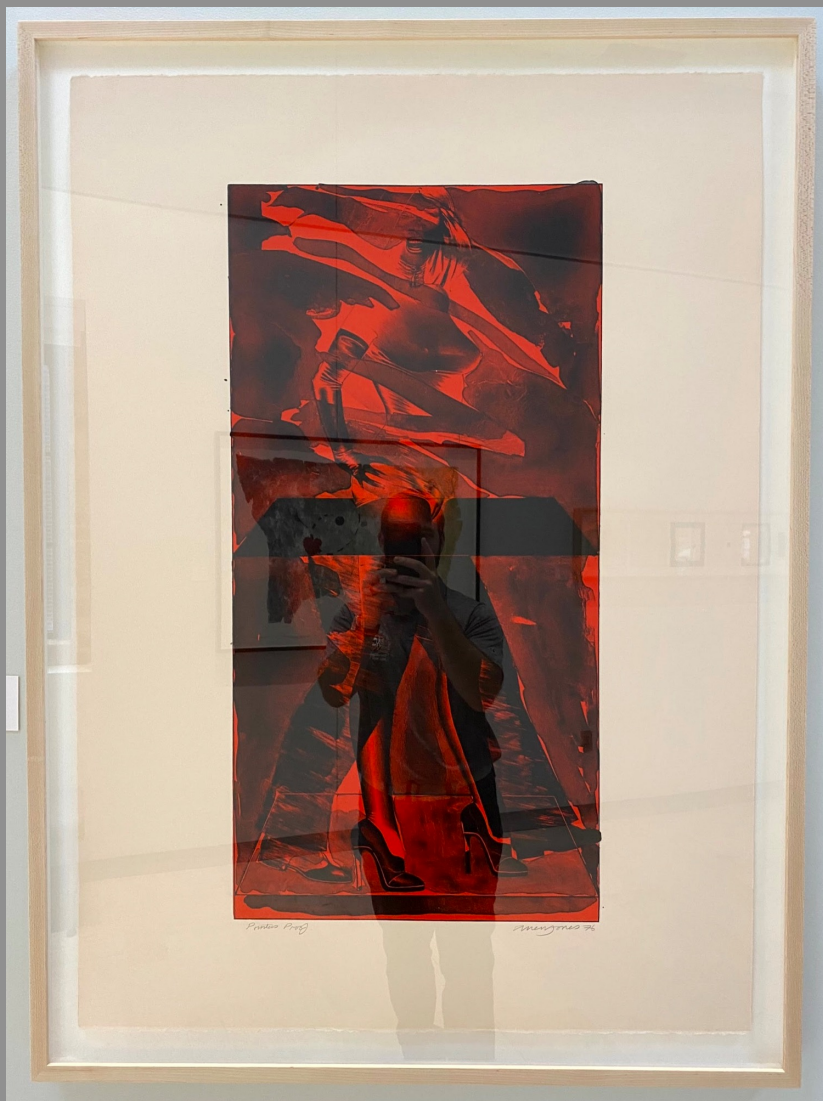
FW

Robert Cottingham

1975

Etching/Aquatint

28" x 22"



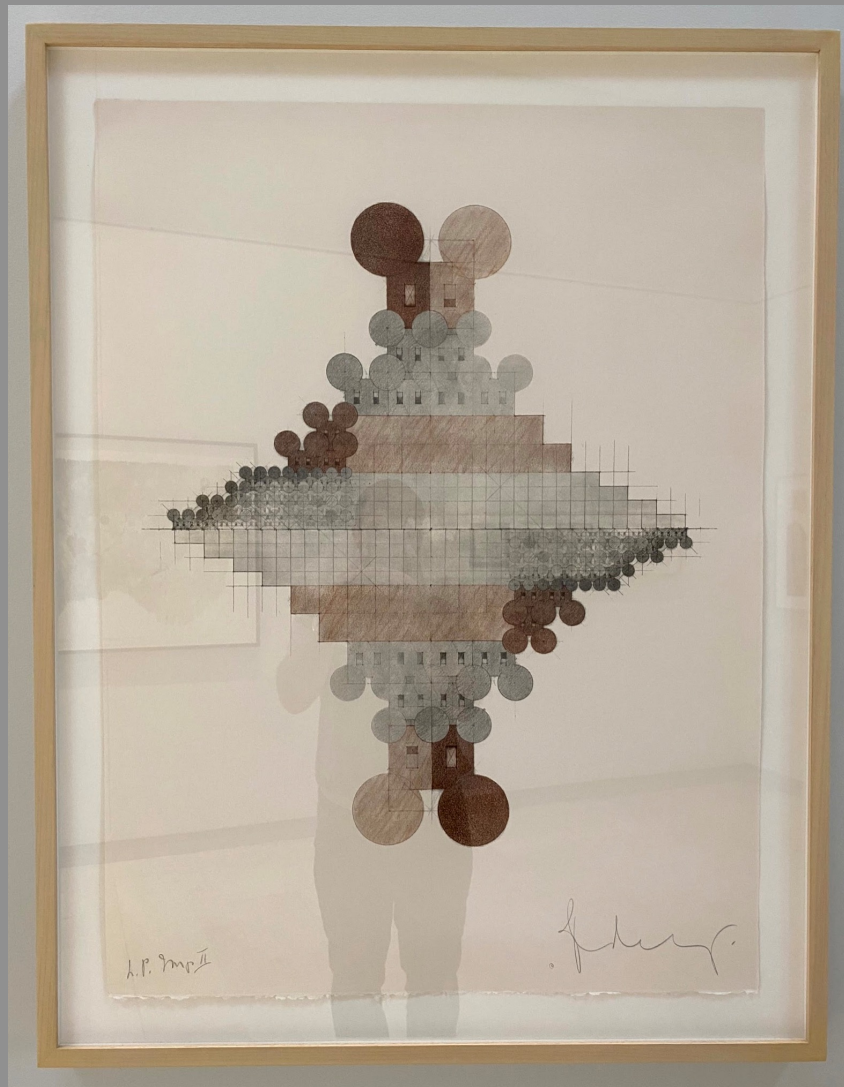
## Red Feat

Allen Jones

1976

Lithograph

41.5" x 29.75



## Geometric Mouse

Claes Oldenburg

1976

Lithograph

35" x 26"



## Thank You Hide

William T. Wiley

1972

Lithograph

35" x 48"



## Burial Mound

Pat Steir

1976

Suite of 7 Etchings

10" x 10" each



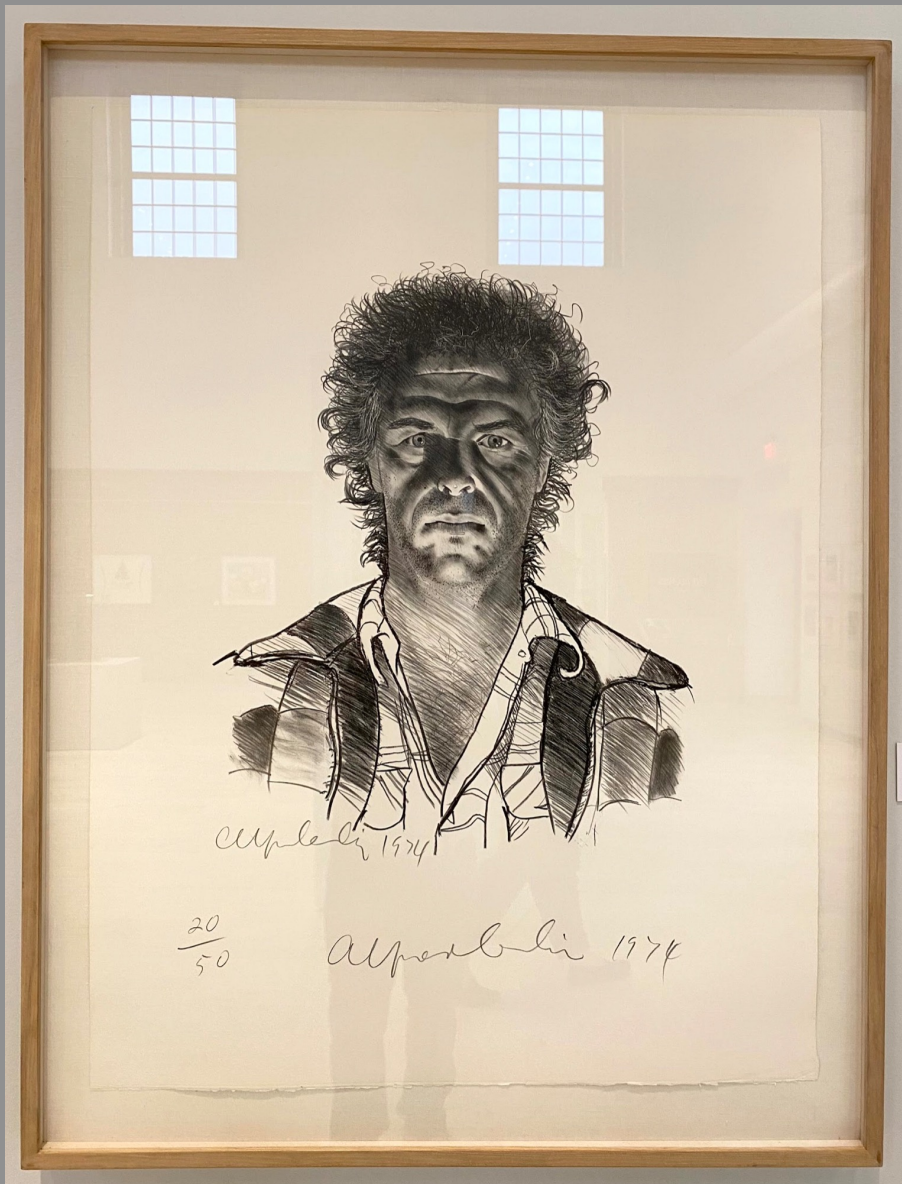
**Girl on Orange and Black Mexican Rug**

Philip Pearlstein

1973

Lithograph

24.75" x 34"



## Alfred Leslie

Alfred Leslie

1974

Lithograph

40" x 30"



*Dennis Oppenheim* *Rocked Circle - Fear II*  
**ROCKED CIRCLE - FEAR** 1973. One half hour video tape / with Super 8 film loop.  
A situation was created which allowed registration of an exterior stimulus directly through facial expression. As I stood in a 5' diameter circle, rocks were thrown at me. The circle demarcated the line of fire. A video camera was focused on my face. The face was captive, its expression a direct result of the apprehension of hazard. Here, stimulus is not abstracted from its source. Fear is the emotion which produced a final series of expressions on the face.



# Rocked Circle - Fear

Dennis Oppenheim

1973

Lithograph

22" x 30"





## Silver Bowls

Jeanette Pasin Sloan

1979

Lithograph

32.37" x 42.75"

1980's



R.T.P.

"Fem-Rouge"

E. Paschke '87

## Fem-Rouge

Ed Paschke

1987

Lithograph

28" x 36"



## Dark Loop

Martin Puryear

1982

Woodcut

22.75" x 30"



## Family Tree Mourning Print

Roger Brown

1987

Woodcut

10.75" x 13.75"



## Salon of a Thousand Souls

James Drake

1997

Lithograph

57" x 43"



## Tropical Punch

Don Nice

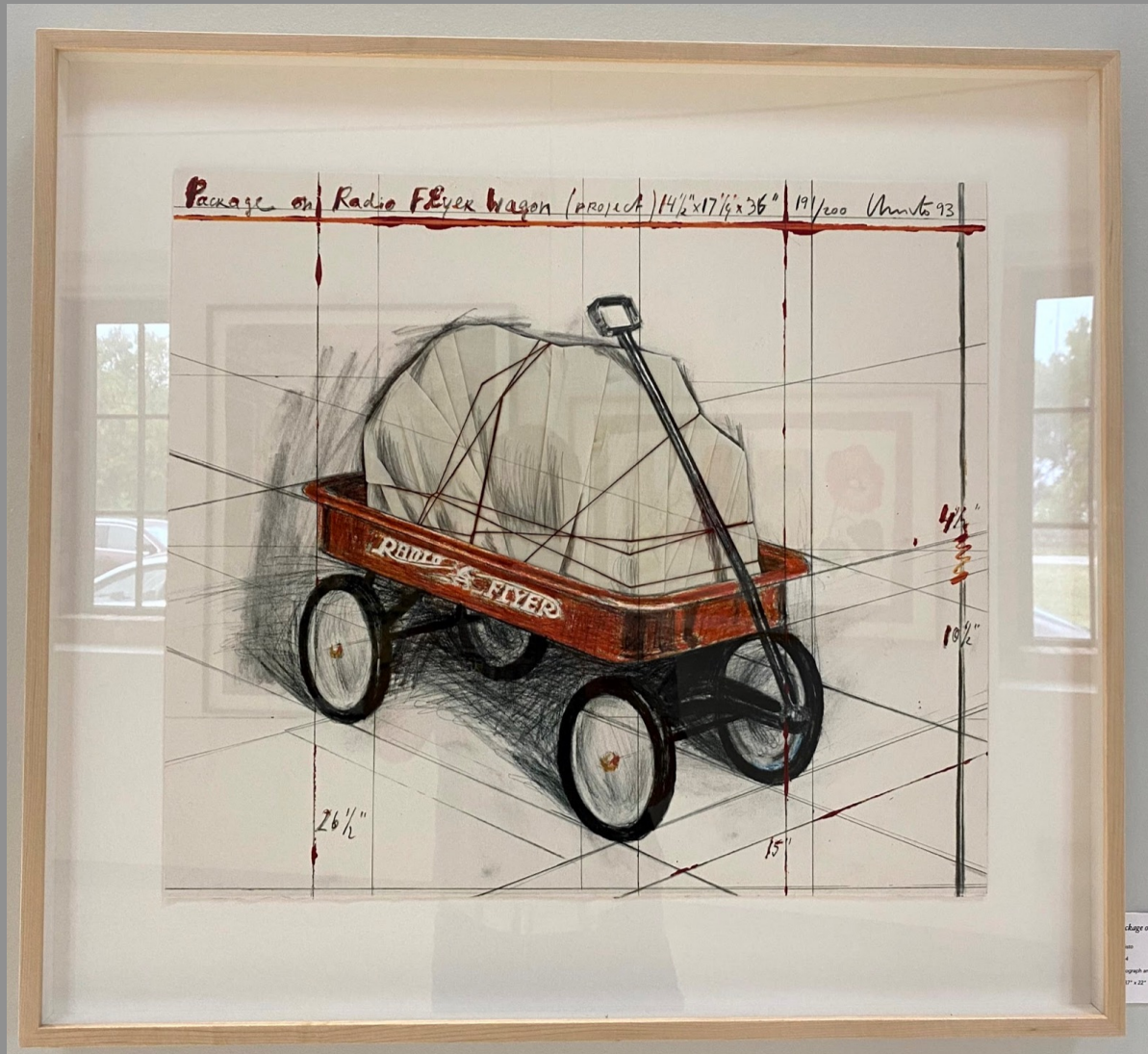
1994

Lithograph

29" x 45"

1990's





# Package on Radio Flyer

Christo

1994

Lithograph and Collage with thread

19.37" x 22"



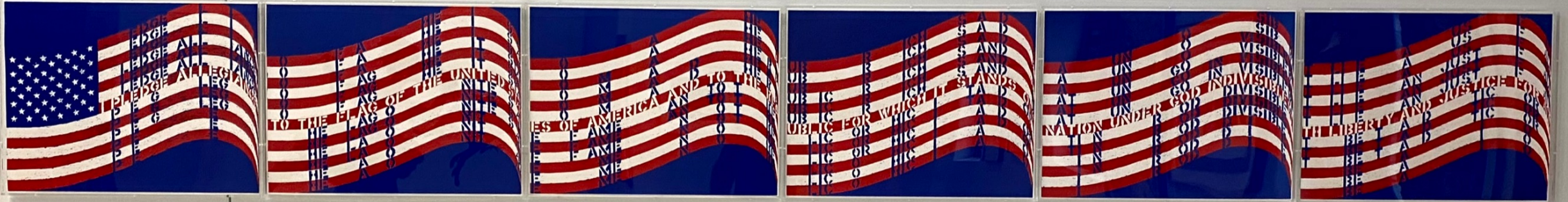
Art

Robert Cottingham

1992

Lithograph

46" x 46"



## Wavering Flag

Vito Acconci

1990

Set of 6 Lithographs

18" x 24" each



## Keys to the Coop

ARTIST Kara Walker

1997

Linocut

42" x55"

2000's



## South of the Serengetti

Garo Antreasian

2001

Lithograph

60" x 21"



## Parallel Curves

Sol Lewitt

2001

Lithograph and Aquatint

36" x 36"



## Uncle Tom's Cabin

David Levinthal

2000

Suite of 8 photogravures

17" x 20" each





Roxy

Robert Cottingham

2002

Lithograph

46" x 46"



Pork Chop Suey,  
Oinktoberfest

Tom Huck

2008

Woodcut

52" x 39"



## Love Me

Amer, Ghade/Reza Farkhondeh

2006

Lithograph with Hand Sewing

20" x 30"

2010's



## Rapture's Germination

Lesley Dill

2010

3-D Lithograph with thread

24" x 18" x 7"



## This Can't Be

Mary Mito

2014

3 Panel Lithograph

20.25" x 72"



## Untitled

Sergio Sanchez Santamaria

2018

Lithograph

20" x 30"



## Miss Rite

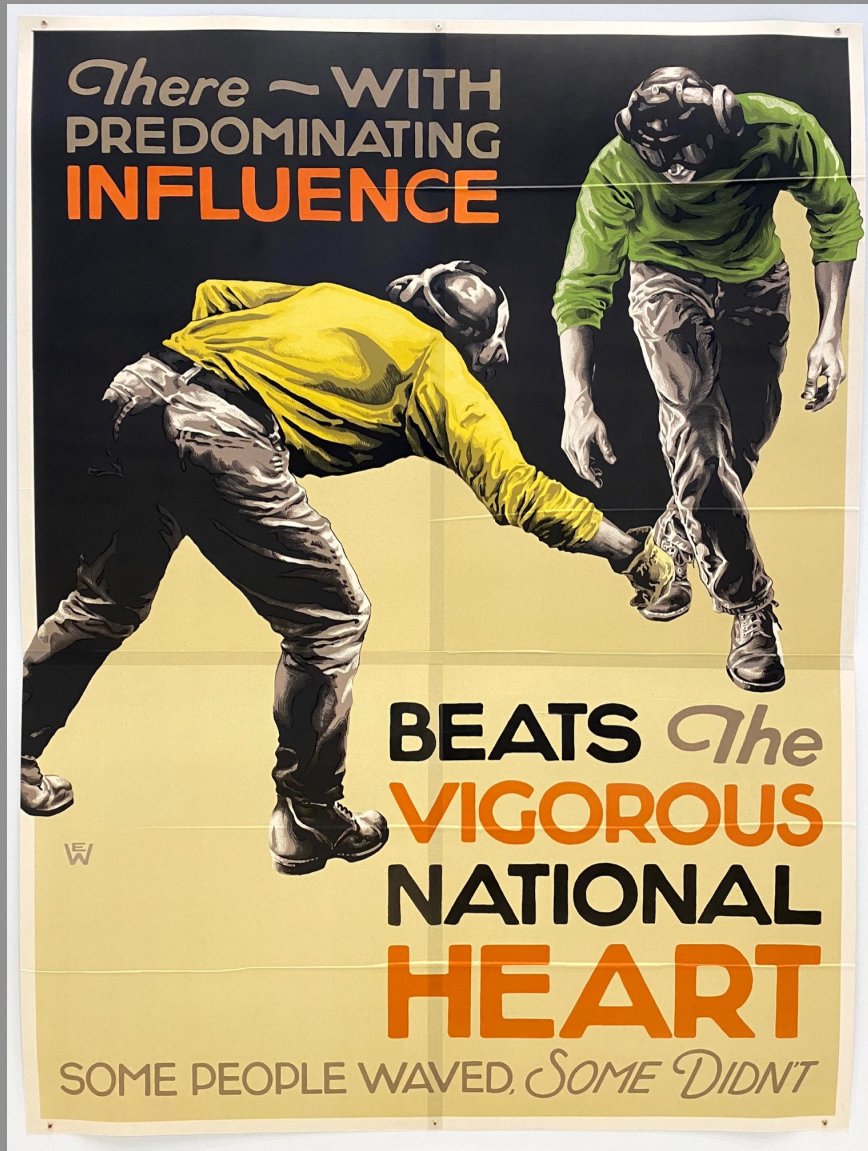
Tom Huck

2019

Woodcut

38" x 12"





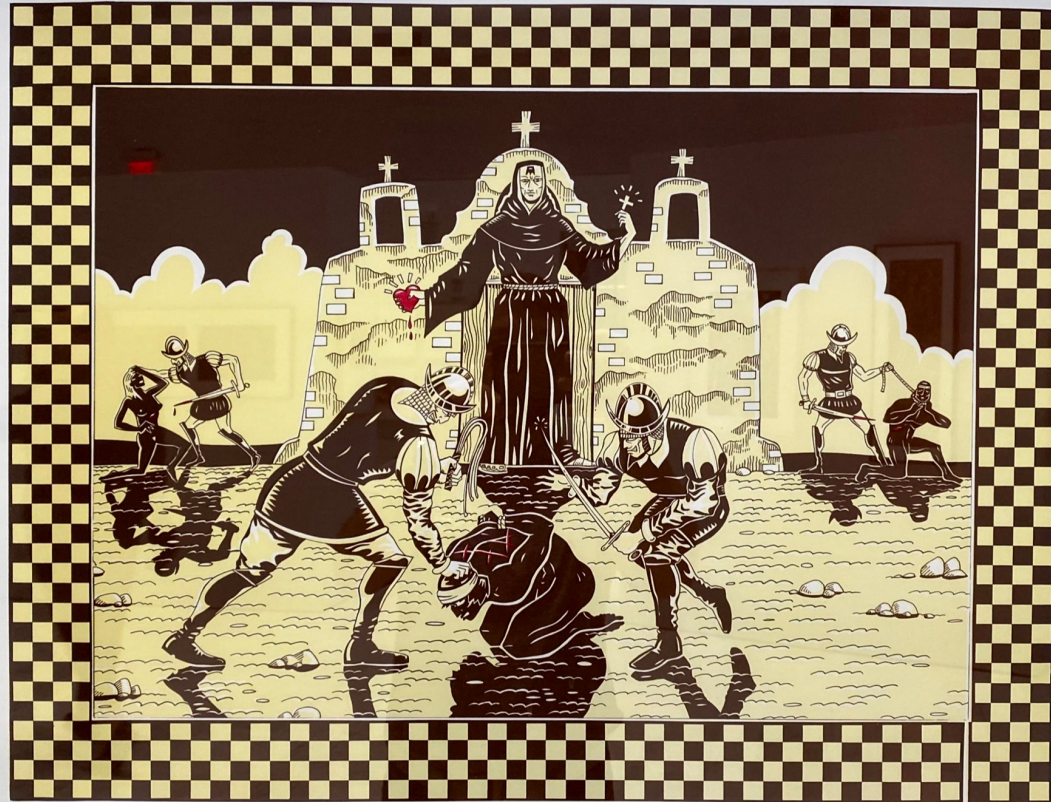
Some Waved

Ericka Walker

2018

4 Panel Lithograph

8' x 5'



XVII XX

"SAINTS AND SINNERS"

DIEGO ROMERO 17

## Saints and Sinners

Diego Romero

2017

Lithograph

24.12" x 30.5"



## The Watchers

Fatima Ronquillo

2021

Lithograph

28.75" x 20.25"



I Understand Loneliness  
Through the Memory of  
My Name

Heidi Hahm

2016

Lithograph

30" x 21.5"



## Big Yell'er

Kathryn Lynch

2014

Lithograph

25" x 30"



## The Black Widow Watches On

Nusra Lureshi

2016

Lithograph

27.87" x 28.37"



20/40

Diamonds

Jeanette Pasin Sloan 2021

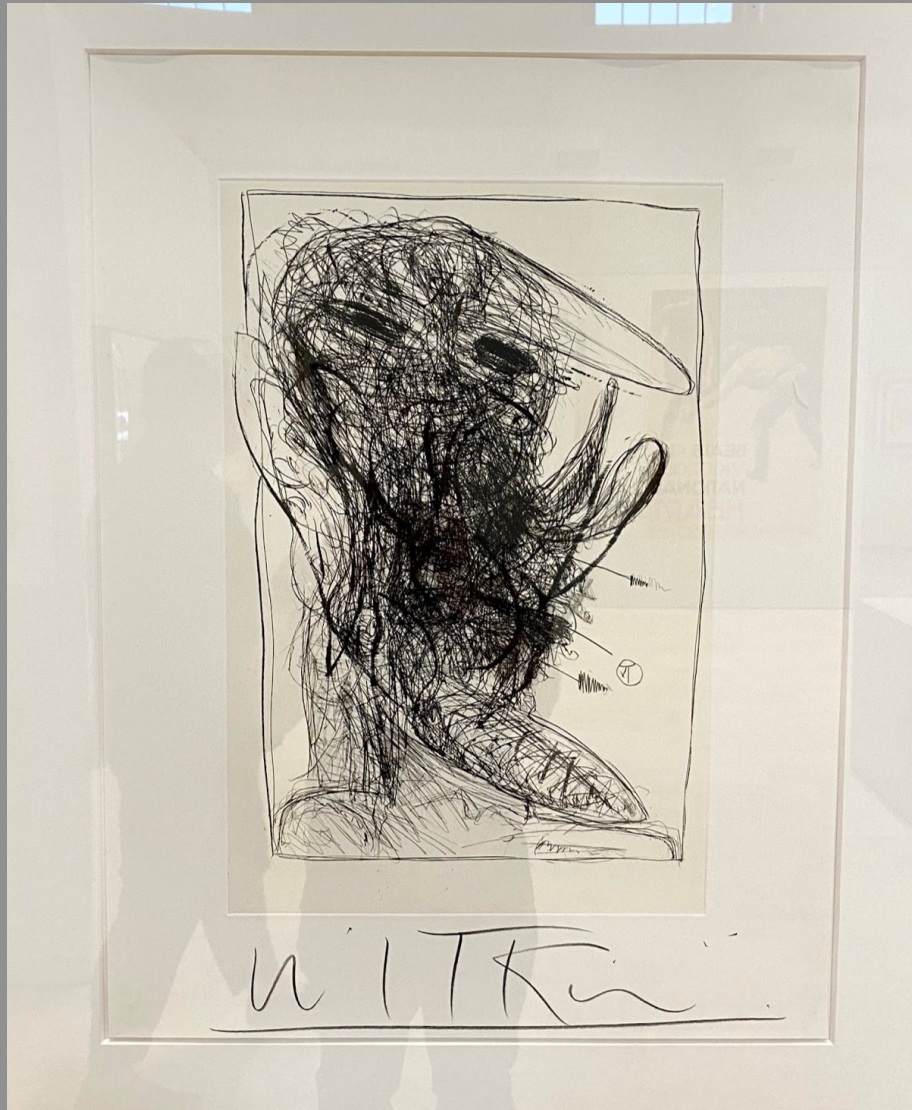
## Diamonds

Jeanette Pasin Sloan

2021

Lithograph

23.5" x 25.25"



## Satan

Joel Peter Witkin

2006

Etching

24" x 18"





## Say My Name

Ambreen Butt

2018

Lithograph

36.5" x 24.5"



# The Crowning

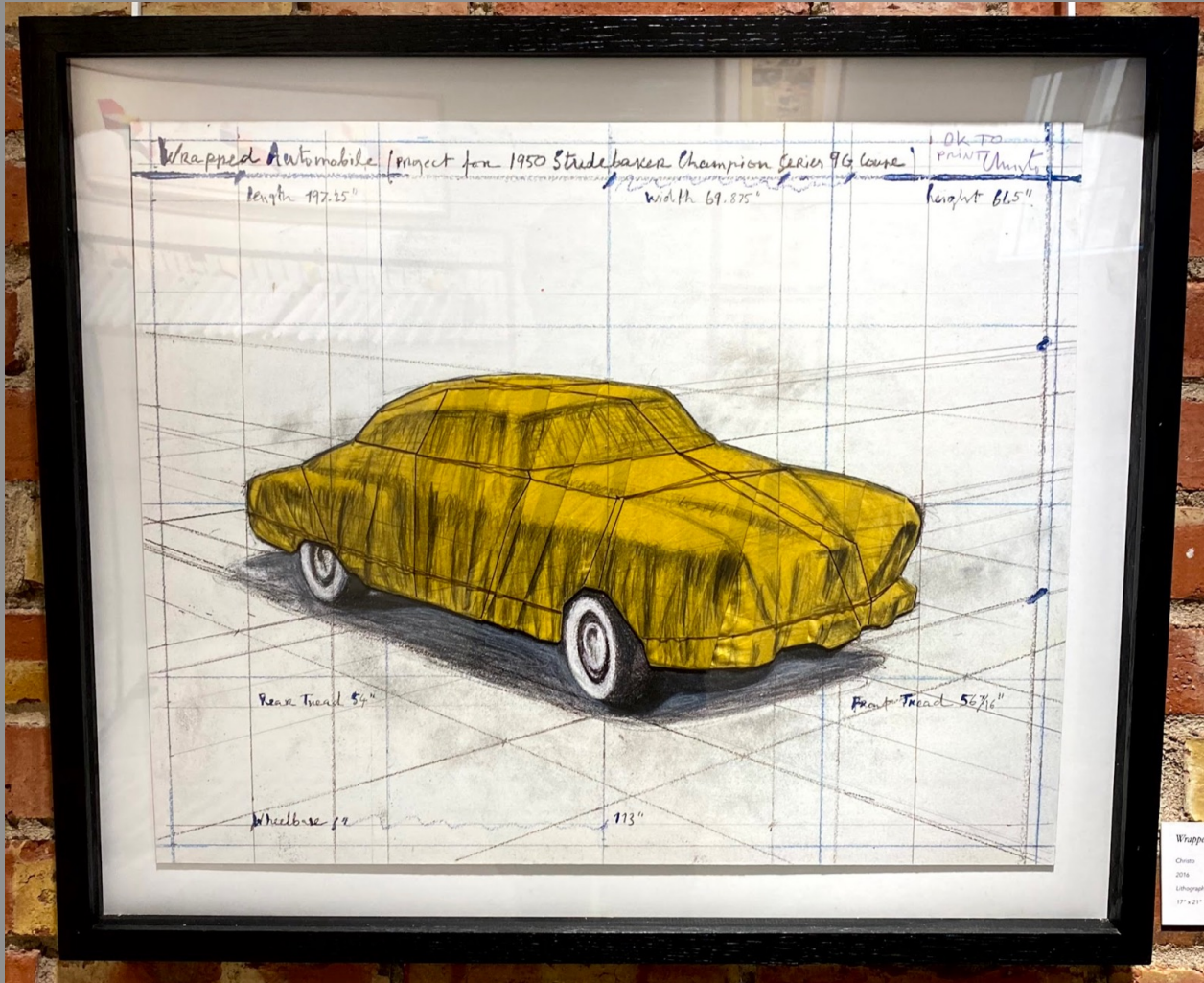
Judy Chicago

2012

Lithograph

24" x 24"

The C  
Judy Chi  
2012  
Lithograph  
24" x 24"



## Wrapped Studebaker

Christo

2016

Lithograph and Collage with thread

17" x 21"

Wrapped  
Christo  
2016  
Lithograph  
17" x 21"



## He Launched a New Career as a Photographer

Steve Gianakos

2016

Lithograph

27" x 21.5"



## Top Ten Historical Similarities

Allen Ruppersberg

2012

Suite of 10 Lithographs

16" x 20" each



## Language of Violence 2

Nicky Nodjoumi

2018

Lithograph

33" x 26"



## Multus

Charles Ginnever

2012

3-D Etching

12" x 20" x 18"









## An Artist Who Bends Stone

Darrell Wilks

2018

Lithograph with Chine Colle

24" x 15"

**MODERN LOVE**  
 Me, my husband and my  
 travel wife. BY CLARE BOYD  
**IN THE BURROW**  
 Who cares what Megan Kelly  
 wears? BY NATALIE FRENCH



**ENCOUNTERS**  
 Malcolm Gladwell's side  
 hustle. BY LAM GUYEN NGUYEN  
**IT'S WORTH**  
 A whitehead O.C. caped  
 romance. BY KATHARINE WANG

**Sunday Styles**  
 @ the New York Times

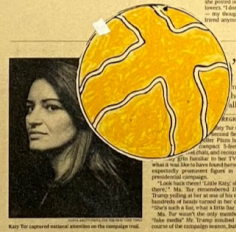


**An Anxious Nation**

To doctors it's a medical condition,  
 but anxiety is starting to seem like  
 a sociological one, too.

**BY ALEX WILLIAMS**  
 This past winter, Sarah Baker, a 27-year-old  
 medical resident in Boston, visited a friend  
 in Oregon about an impending visit, and  
 what she found surprised her by how  
 the person on Twitter to her 16,000-plus fol-  
 lowers. "I had heard that it was a hard  
 job, but I didn't realize how hard it was to  
 be a resident," she wrote, appending the  
 hashtag #ResidentLife.

Thousands of people  
 all over the world post  
 their own versions of  
 the #ResidentLife tag-  
 on to the internet social tag of 2017.  
 It has become an everyday ap-  
 pointing litmus test for just one Twitter  
 or social media, with its constant  
 stream of updates and images, and  
 its ability to reach a  
 global audience.



Kelly for captured national attention on the campaign trail.



**'t Rattle**  
 The idea of  
 the long  
 term  
 impact  
 of the  
 campaign  
 trail on  
 the  
 political  
 process  
 is still  
 being  
 debated.  
 But the  
 evidence  
 is clear:  
 The  
 campaign  
 trail has  
 become  
 a major  
 force in  
 the  
 political  
 process.  
 It has  
 become  
 a major  
 force in  
 the  
 political  
 process.  
 It has  
 become  
 a major  
 force in  
 the  
 political  
 process.

70

*Darrell Wilks*

**An Anxious Nation**

Darrell Wilks

2018

Lithograph with Chine Colle

24" x 15"



## PYRE

Peregrine Honig

2016

Series of Lithographs  
with metal stand



## Off the Grid

Mokha Laget

2016

Portfolio of 7 Lithographs

19.75" x 22" each



## Take Out

Fiha Moon

2012

3-D Lithograph

6.25" x 4.125" x 4.125"

